

# HOOKLOADERS & SKIPLOADERS FROM PALFINGER



# MAXIMUM PAYLOAD, EFFICIENCY AND LONGEVITY.

Palfinger occupies a leading global position in the production of hookloaders and skiploaders, in addition to the world-renowned lorry loader cranes already so popular in the UK.



**Palfinger's functionally-designed hookloaders and skiploaders offer low maintenance and a market leading weight to capacity ratio, which optimises the efficiency of your vehicle across a wide range of applications.**

Whether your application is in the waste industry, recycling sector, groundcare and arboriculture or any of the local authority markets, each application has a specific requirement.

These various bespoke solutions have been fulfilled by Palfinger for over 40 years, and we are proud that all of the products delivered are of the highest quality and safety standard, manufactured to UK CHEM standard.

# MANUFACTURED FOR EFFICIENCY AND PROFITABILITY

**Palfinger's hookloader and skiploader models are manufactured in a way to ensure efficiency, reliability and increased payload for all customers.**

**The only manufacturer with ISO 3834-2 welding accreditation**

Palfinger are the only hookloader and skiploader manufacturer with ISO 3834-2 accreditation for the welding processes used. This accreditation guarantees high quality, standardised and safe welding on all models from trained welders. Accreditation is achieved through a highly scrutinised process of design validation, welding process monitoring and periodic post-production checks.

**The lightest on the market**

Thanks to the design and manufacture processes developed by Palfinger, we offer the lightest range of hookloaders and skiploaders in the market. The use of high tensile steel to ensure correct thickness and strength, without unnecessary use of materials, as well as ISO 3834-2 accredited welding, ensures our machinery is strong and powerful without excessive weight.

This gives you increased payload and reduced fuel costs, enhancing your profitability.

**Passing the test of time**

Our hookloaders and skiploaders are tough, robust and long-lasting – imperative for heavy use in a demanding sector. All Palfinger designs are resilient and systematically factory-tested, simulating more than 10 years of lifting operations, before being overloaded until breaking point. That's how we know you can rely on our loaders to stand the test of time, no matter how or when you use them.

**POP – Palfinger Origin Protection**

Before assembly all main components are sand-blasted, degreased, primer painted and electro-statically final coated according to your specification. All other parts are zinc nickel anticorrosion treated to ensure longevity. POP treatment meets ISO 12944 standard specifications for surface protection under classification 3, and ensures increased lifespan, less corrosion and material damage and increased resale value, keeping your vehicle working for years to come.



*Palfinger T25 Hookloader*

# HOOKLOADERS FROM PALFINGER

**With models available for all GVW truck chassis variation, Palfinger offers the widest range of hookloaders in the market.**

The unique hook boom arrangement from Palfinger is perfect for handling a wide variety of container-based modules.

Flexible and robust with low dead weight and great lifting and tipping capacity, Palfinger hookloaders are ideal for waste and scrap metal disposal, building and construction materials, containerised goods and transporting specialised modules such as fire, crime, accident, armed forced and medical response units.

## **High Payload**

The use of high tensile steel reduces the hookloader weight for increased payload. This optimised weight also increases truck life longevity and reduces fuel costs.

## **Low Transport Height**

Low built and compact subframe enables low transport height. The low centre of gravity provides better and safer driving conditions. It also enables loading of higher containers for increased transport volume.

## **Customer Oriented Design**

Low maintenance, including threads in the pins for easy removal and greasing free sliding parts.

## **Increased Tipping Capacity**

Palfinger telescopic hookloaders are bi-point units, which reduces horizontal forces and increases the tipping capacity.

## **Pneumatic Safety Latch**

The latch ensures increased safety and can only be opened on demand by the driver.

## **Stabilisers**

Axle stabilizers can be utilized when needed to ensure maximum stability and load capacity throughout the loading and tipping process.

## **Optimised Speeds**

Bi Speed, standard on each unit, is a low speed to catch the container bar easily and safely. The quick speed option allows for the reduction of the cycle times, particularly those for empty container placement and tipping. The combination of this quick tipping return, patented by Palfinger, and the Rapid Motion system can reduce the cycle time of the hooklift by 50%.

## **Hydraulic Adjustable Hook Height**

Only available on T10 DUO. It allows the handling of containers with different hook heights, offering a greater flexibility in your container fleet.

## **Hydraulic Locking**

With rear hydraulic locking as standard, we also offer front hydraulic locking which is essential when operating in conjunction with Palfinger PK lorry loaders. It is also useful for very high and long containers, tank containers or containers with hydraulic devices such as compactors.

## **PAD – Pro Active Drive Control System**

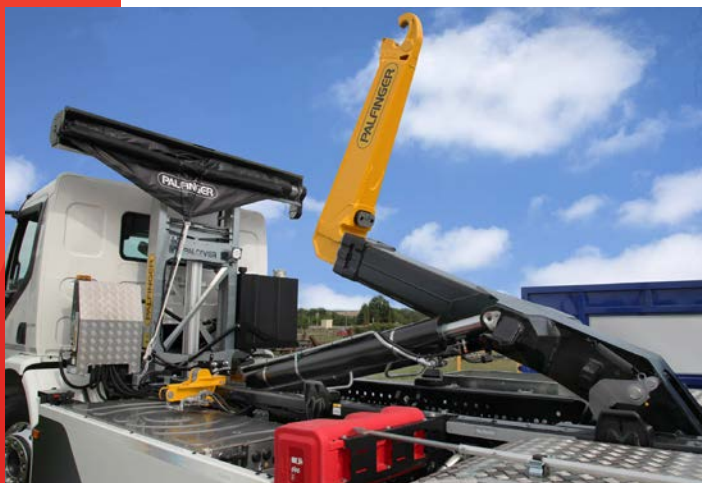
Palfinger's PAD Control System is ergonomic and intuitive. All check lights are featured on the control for ease of use and visibility. Magnetic fastening and a flexible cable facilitate easy cab control manipulation.

## **Soft Stop**

Soft stop ensures a soft landing after loading and tipping. This saves the truck, hookloader and container from shocks and damage, and reduces noise.

## **Hydraulic Telescopic Under-ride Protection**

The function is integrated on cab control with information on when the URP is out in transport position. It is also available in a manual version. Parts are standard KTL (cathodic dip painting) treated and coated black.



*Palfinger PHT20 Hookloader*



# THE CiTy HOOKLOADER

## More load, less maintenance.

The CiTy Hookloader from Palfinger offers a low pick-up angle to provide an optimal ratio between lifting capacity and tare weight. Easy to operate and low maintenance, it is the ideal solution for handling a wide range of equipment used by municipalities, the recycling and waste industry or craftsmen.

### Increased Payload

The CiTy Hookloader from Palfinger is the lightest on the market, due to its robust steel design, and offers maximum weight optimisation and increased payload.

### Reduced Maintenance

CiTy hookloaders offer maintenance without lubrication, as it is assembled with self-lubricating

bushes, resistant even under heavy loads. This results in both time and money savings, with low maintenance costs.

### PAD-Touch

The PALFINGER-developed PAD-Touch control creates a new standard for arm control – perfectly suited to the handling of the hooklift, thanks to a single joystick operated in the cabin. This allows for precisely controlled container movements, while the screen informs the operator of the arm position in real-time.

### Easy & Efficient Mounting

The screwed mounting of brackets and accessories on the CiTy, all treated against corrosion, increases the lifetime of the hookloader and enables quick replacement of accessories.



PAD-Touch control

# TELESCOPIC HOOKLOADERS FROM PALFINGER

## The right Hookloader for the right chassis.

Palfinger's range of telescopic hookloaders offer ultimate versatility no matter your vehicle. Able to handle a variety of different container lengths, with low transport height and increased tipping capacity, you'll be able to move more containers, more easily.

Palfinger's use of high tensile steel reduces the weight of the hookloader too, giving you increased payload, meaning you take make more money from your lifts, reducing fuel costs and increasing the life of your vehicle.

	GVW Chassis (t)															
	3.5		5.5		7.5		9		10		15		19		26	32+
CiTy																
PH T05																
T07S																
T10 DUO																
T15																
PH T20																
PH T22																
T25																

	Unit Length (mm)	Container Length (mm)	Weight (kg)	Max Tipping Angle (°)	Transport Height (mm)
CiTy	2360-3110	2200-3600	330-350	55	160
PH T05	3000-3900	2800-4600	660-685	50	180
T07S	3550-4600	3550-4600	1020-1110	52	220
T10 DUO	3550-4900	2800-5800	1130-1230	52	220
T15	5500	4877-6100	1700	47	300
PH T20	5600-5900	4880-7000	2500-2550	50	255
PH T22	5600-5900	4880-7000	2550-2560	50	255
T25	5610-6210	4627-7315	2900-3050	50	280

# SKIPLOADERS FROM PALFINGER

**Palfinger produces powerful vehicle mounted radial hydraulic lifting units for safe container handling and transportation.**

They offer an ideal weight-to-capacity ratio, optimising the efficiency of your vehicle across a wide range of applications.

#### **Quality and Innovation**

Palfinger Skiploaders offer a high tipping ability with bi-speed and rapid motion for faster loading and unloading.

With a durable synthetic wear plate, as well as front box cover and steel corrosion resistance floor, you can be sure your skiploader will stand the test of time.

#### **Safety Solutions**

Palfinger skiploaders ensure increased safety for users, with secure hydraulic container locking, 6 lashing points for securing a variety of loads, overload alert, rear access steps with integrated handrail and PALCOVER sheeting system.

#### **User friendly**

Daily use is simple with easy access to the platform and control systems. Independent or simultaneous stabilisers and telescopic arm movements are available, along with chain storage hooks on the arms and Autolock system for container stopping. Palfinger also offer a range of possible control combinations including:

- Left or right external control
- Cab control and left/right external control
- Radio remote control and left/right external control

#### **Flexible and Service/ Maintenance friendly**

Palfinger offer a wide range of skiploader options to meet your individual requirements, such as fixed, articulated or roller stabilisers, a variety of chains and additional details for specific applications, such as short or long arm and custom lashing points for unusual or non-standard loads.

## SOLID SKIPLOADER RANGE – SLD

**Robust & Easy to Use.**

PS

Palfinger  
Skiploader

T

Telescopic

14/18

Capacity

SLD

Solid Model  
Line



*Palfinger PST14 Skiploader*

Palfinger's new SLD range of skiploaders has an easy to access platform and control system which simplify the driver's job and make each task simpler, quicker and more efficient, saving you time and money.

The optional radio-remote control is easy and comfortable to use, with a simple 'Start & Stop' function.

SLD Models include:

- PS T 14 TEC
- PS T 18 TEC



# TECHNOLOGY SKIPLOADER RANGE – TEC

Easy handling. Complete safety.

PS

Palfinger  
Skiploader

T

Telescopic

14/18

Capacity

TEC

Technology  
Model Line

Thanks to its lateral hydraulic locking, the container is secured on the platform during transport.

The PS T TEC range of skiploaders can load quickly and accurately even in unfavourable conditions or with challenging container situations, including the ability to load containers up to 2m in width.

Its radio-remote control is included as standard and is easy to use, with simple 'Start & Stop' buttons. It also benefits from several new options for increased flexibility, including high-tipping, front box cover and top cross beam.

TEC Models include:

- PS T 14 TEC
- PS T 18 TEC

	Truck GVW (tons)	Unit Length (mm)	Container Length (mm)	Transport Height (mm)	Weight (kg)
PS T 14 SLD/TEC	18-21	3800-4600	3000-4500	310	3150-3275
PS T 18 SLD/TEC	21-26	4800-5600	3000-5000	310	3600-3820



Palfinger PST14 SLD5 Skiploader



Bradford  
Falkirk  
Devizes  
Leicester  
**01380 733513**



**PALFINGER.CO.UK**